



Study Bali International

GLOBAL COMMUNICATION PROGRAMME

Stay • Study • Enjoy

STAY, STUDY & ENJOY WITH SBI

Learn English in a Tropical Paradise & Make Friends from Around the World

Bali is more than just a study destination—it's a paradise where you can improve your English, explore breathtaking landscapes & connect with people from all over the world.

SBI students' study in small mixed nationality classes & after lessons, students often gather in the student café, relax by the pool, or explore Bali together, forming lasting friendships.

Our students come from Japan, South Korea, Germany, Switzerland, France, Taiwan, Kazakhstan, Russia, Brazil & many other countries, creating a truly international learning experience.

About Us



Study Bali International (SBI) provides high-quality English programs in a vibrant, tropical setting. Since 2017, we have welcomed thousands of students to improve their English while experiencing the beauty & culture of Bali.

Our Learning Resort combines modern classrooms, onsite student hotel rooms, a swimming pool, a student café, gym, & lush gardens—creating the perfect study & relaxation environment.

Why Choose SBI?



Qualified native & high-proficiency non-native teachers (from the UK, Australia, South Africa, Indonesia, etc).



Engaging, interactive lessons in a tropical learning environment.



Modern classrooms for interactive learning.



Student support for accommodation, transport, & visas.



Onsite accommodation at the SBI Learning Resort (optional).



A diverse international student community.



A wide range of student nationalities.



Exciting student events & extra activities .



Student café with breakfast, lunch & dinner options (optional).



Co-working space.



Studying at SBI isn't just about learning English, it is about making friends, enjoying good times & exploring all that Bali has to offer.

Global Communication Programme (20 hours/week)

- ✓ 15 hours General English classes (focus on speaking & listening, with some reading & writing) (Minimum 80% attendance required to receive a certificate)
- ✓ 1 hour Conversation practice (optional)
- ✓ 1 hour Grammar Clinic (optional)
- ✓ 2 hours Specific skills workshops (optional), covering:
 - Email writing, workplace small talk, meetings, presentations & negotiations
 - Telephone & video call etiquette, report writing & handling complaints
- ✓ 1 hour Bahasa Indonesia for beginners (optional)
 - Small classes (max. 12 students)
 - Monthly progress reports & certificates
 - Join any Monday!



General English Classes

Study Bali International's (SBI) General English Classes are designed for visiting international students who are looking to combine English language training with a paradise holiday in Bali.

Students study in group classes with a maximum of 12 students per-learning group & students are from a mix of different countries such as France, Italy, Spain, South Korea, Japan, Russia, Kazakhstan, Turkey & Indonesia.

SBI General English Classes focus on building students' confidence in English & maximizing opportunities to communicate. Students rapidly their English skills in SBI's mixed nationality classes.

SBI General English Study Cycle

A1**ELEMENTARY****A2****PRE-INTERMEDIATE****B1****INTERMEDIATE****B2****UPPER-INTERMEDIATE****C1****ADVANCED**

In General English classes students will:

- ✓ Join on any Monday
- ✓ Study for 15 hours per week
- ✓ Be taught by qualified native speaker teachers
- ✓ Explore globally relevant topics
- ✓ Learn & practice new target language
- ✓ Engage in class topic-based discussions
- ✓ Practice language in role plays & class projects
- ✓ Receive feedback on accuracy & pronunciation
- ✓ Receive monthly reports & completion certificates
- ✓ Enjoy class outings & extra activities



Conversation & Grammar Clinic

Each week offers a free speaking conversation class & a focus Grammar Clinic & students will join these classes with students at a similar English level.

These classes are aimed at giving students focused practice in specific skill areas with a key focus so that they can build more confidence in fluency & accuracy.

These classes are held after lunch from 13.45 to 14.45 on Monday & Wednesday.



Professional Skills Workshops

Course Information

Level: Intermediate

Day & time: Tuesdays & Thursdays @13:45 - 14:45

Course Description:

These interactive twice-weekly workshops are designed to enhance students' professional communication skills. Each Tuesday, students will learn essential vocabulary & practical strategies for workplace success, including job interviews, presentations, networking & conflict resolution. After the session, they will complete a functional homework task such as analysing case studies, drafting emails, or critiquing real-life workplace scenarios.

On the following Thursday, students will apply their learning through engaging activities like role-plays, presentations, peer feedback & discussions, ensuring they gain practical, real-world experience in a supportive classroom environment.

By the end of the course, students will feel more confident using English in professional settings, enabling them to communicate effectively, build stronger workplace relationships & advance their careers.



Bahasa Indonesia Class

In this class, students are introduced to Indonesian language through an exploration of basic Indonesian grammar, vocabulary & daily communicative strategies. The aim of the course is to give beginners a foundation in the Indonesian language so that they can actively communicate in daily scenarios.

In Bahasa Indonesia classes students will

- ✓ Build a basic vocabulary base
- ✓ Learn functional 'survival' language
- ✓ Learn to have basic daily conversations
- ✓ Practice pronunciation
- ✓ Learn basic grammar structure

Class Schedule

General English	Monday to Friday
	Session 1: 09:30-11:00
	Session 2: 11:15-12:45
Conversation Classes (Optional)	Monday 13:45-14:45
Professional Skills Workshops (Optional)	Tuesday 13:45-14:45
Bahasa Indonesia (Optional)	Tuesday 15:00-16:00
Grammar Clinic (Optional)	Wednesday 13:45-14:45
English Games Class (Optional)	Thursday 13:45-14:45
Self Study Workshop (Optional)	Friday 13:45-14:45



****Optional attendance:** Students should sign up at the beginning of the week during the morning coffee break. It is understood that students may not always attend optional classes, & that is okay. However, General English classes require at least 80% attendance in order to achieve a certificate.*

Private Classes

Students wanting a more specific study focus can also request additional private class packages & these are available for the following course types:

- ✓ IELTS
- ✓ TOEIC
- ✓ Business Correspondence
- ✓ Business Conversation
- ✓ Presentation Skills
- ✓ Bahasa Indonesia

Private classes are for between 1-4 students per learning group & can be booked from 8.15 to 9.15 & after 15.00 from Monday to Friday.



Enrollment & Inquiry Process



Request a Quotation



Complete the Online Enrollment Form



Take a Placement Test



Make payment



Receive Booking Confirmation & Class Placement

Request a Quotation – Get a personalized quote for your desired study or stay period.

Complete the Online Enrollment Form – Fill out your details & select your preferred study dates (and accommodation, if applicable).

Take a Placement Test – This helps us determine your English level & place you in the right class.

Make Payment – Secure your booking by paying the course & accommodation fees.

Receive Booking Confirmation & Class Placement – We will send your confirmation details, visa assistance (if needed) & class schedule.

Student Community

30 - 50

Adult learners
(seasonal)

Classrooms

6 Main classrooms

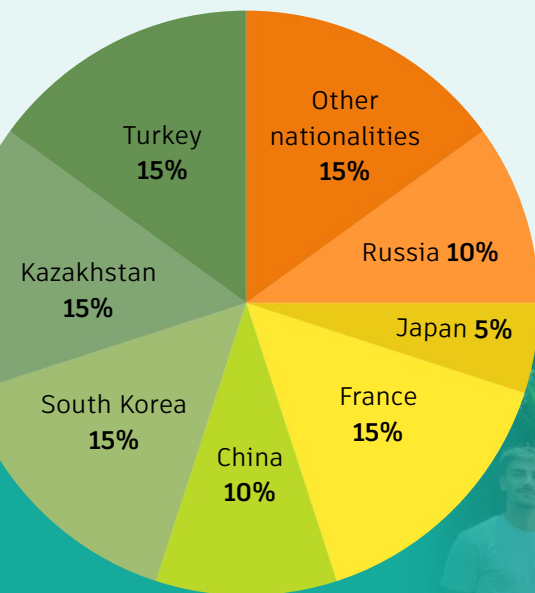
2 Private classrooms

Maximum Class Size

12 students per class

Accommodation

- * Pool view / pool access rooms
- * Offsite / privately booked





Meet Our Teachers

Our experienced teaching team includes native & high-proficiency non-native English instructors from the UK, South Africa, Australia, Indonesia & more. They bring a dynamic & communicative approach to teaching, ensuring an engaging & supportive learning environment for all students.



Willy – SBI Academic Leader, TESOL-qualified teacher, excellent at developing foundation skills & helping students strengthen their grammar & vocabulary.



Vida (Leeds, UK) – An experienced teacher full of life & energy in the class. She focuses on every student's learning journey & ensures classes are delivered to a high standard.



Sasha (South Africa) – TESOL-qualified teacher, specializes in guiding lower-level students & building confidence through supportive instruction.



Jasna (South Africa) – Experienced teacher who engages students in role plays & brings language to life, making learning fun & practical.



Rhys (USA) – CELTA-certified teacher, experienced in teaching higher-level students. He emphasizes accuracy & fluency in communication, helping students refine their advanced language skills.



Agnes – CELTA-certified teacher with many years of experience, guides students to improve their confidence & accuracy in a friendly classroom environment..



Accommodation

SBI Learning Resort

Accommodation

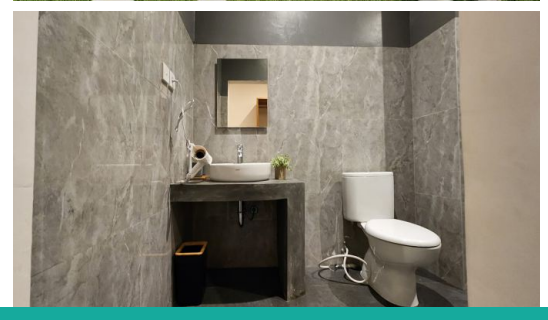
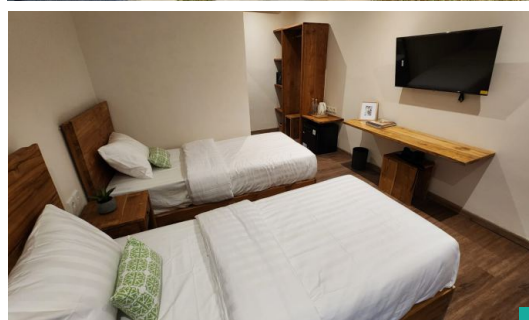
SBI Learning Resort

📍 Celagi Basur street, Jimbaran, Badung Regency - Bali.



The **SBI Learning Resort** is located on Celagi Basur street in Jimbaran, Bali, & welcomes adult students from all over the world to stay & study in a purpose built oasis for international learners.

The resort is located 15 minutes from the airport & 1.9 km from Jimbaran Beach, SBI offers modern onsite accommodation with: Single & twin rooms with private balconies, air-conditioning, smart TV, fridge, & workspace, High-speed WiFi & 24/7 security, pool, café, & student lounge

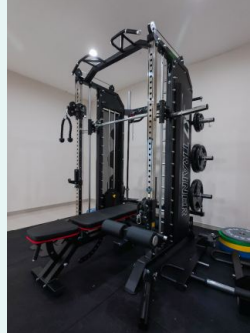


Stay • Study • Enjoy



Resort & hotel room facilities consist of:

- ✓ Single or twin bedroom options
- ✓ High speed Wi-Fi
- ✓ Cold Plunge
- ✓ Sauna
- ✓ Gym
- ✓ Air conditioning
- ✓ Smart TV
- ✓ Private mini refrigerator
- ✓ Workstation
- ✓ Private bathroom with hot water
- ✓ Hair dryer in each room
- ✓ Kettle & tea/coffee mug in each room
- ✓ Private pool view balcony / pool access terrace
- ✓ 2x weekly room clean / 1x weekly linen change
- ✓ 24 hour security



Alternative Offsite Accommodation: For students who prefer to stay offsite or during periods of full bookings at the SBI Learning Resort, we offer accommodation at **Zuri Express Jimbaran** (3-star hotel, 10 minutes' walk from SBI / 2 minutes by bike).

Free Student Activities & Events

- ✓ Weekly yoga sessions
- ✓ Weekly student dinner nights:
- ✓ 2x per month steak BBQ night
- ✓ 2x per month seafood hot pot night
- ✓ Movie nights & Friday afternoon Indonesian afternoon tea
- ✓ Monthly student outings (surfing, rafting, snorkeling, hiking, village tours, etc.)
- ✓ Regular cooking classes





Indoor café area

Student Cafe:

The SBI cafe provides ala carte breakfast options for students staying onsite & this can be pre-booked at USD 25 per week (Monday to Friday) or simply ordered onsite.

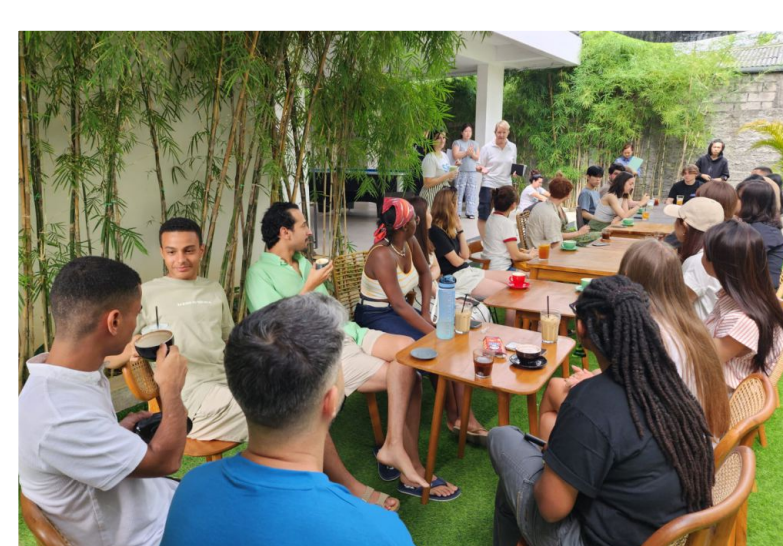
Breakfast is served between 7.00 am & 9.30 am from Monday to Friday & the menu consists of a selection of western & Asian dishes + coffee & tea. Halal & vegetarian dishes are also on the menu as are Bali favourites such as smoothie bowls & eggs benedict.



Breakfast at the SBI café

The cafe also serves a lunch & dinner menu with a variety of options & is a great place for students to hang out before, between & after classes to enjoy socializing with fellow students.

Infused water is free throughout the day for SBI students and the café is open 7 days a week between 7.00 am - 10:00 pm.



Coffee break, welcoming new students



Regular Student events are held in the SBI Cafe

Student Services

To ensure your journey goes smoothly, SBI provides student support services:

- ✓ Accommodation
- ✓ Medical assistance
- ✓ Booking excursions & trips
- ✓ Course extensions
- ✓ Weekend trips
- ✓ Surf lessons
- ✓ Laundry service



VIP Card

The SBI VIP card allows students discounts at some of the best local restaurants, spas & surf schools.



Special Gift

Cuca Restaurant



10%

Bulls Head Steak House



10%

Magal (Korean BBQ)



10%

Jimbaran Food Court (Selected outlets)



10%

Casa Asia



25%

The Calma Spa



10%

Tarabelle Coffee and Eats



Special Rate

Rezha Surf School



Various Outlets at Samasta Mall

Student Events

SBI offers regular events for adults students & this ensures that students staying at SBI always have a fun activity to look forward to after class.

Students BBQ & cultural activities are always popular events as are surfing outings & SBI students often make weekend plans together to visit places such as Ubud & Nusa Lembongan.

July 2026

Adult Student Event Calendar

MONDAY	TUESDAY	WEDNESDAY	THURSDAY	FRIDAY	SATURDAY
		1 Pamung Making @4.00pm	2 Morning Yoga @8.00am BBQ Dinner @4.30pm	3 English Study Club @1.45pm	4
6 Coffee break -Welcome- New Students 11.00 - 11.20am	7 Morning Yoga @8.00am Indonesian Class with traditional snack @9.00pm	8 Surfing (Paid activity)	9 Morning Yoga @8.00am Seafood Hogout Night @6.30pm	10 English Study Club @1.45pm	11
13 Coffee break -Welcome- New Students 11.00 - 11.20am	14 Morning Yoga @8.00am Indonesian Class with traditional snack @9.00pm	15 Tumpeng Creation Day @4.00pm	16 Morning Yoga @8.00am Pizza Night & Boardgame @4.30pm	17 English Study Club @1.45pm	18
20 Coffee break -Welcome- New Students 11.00 - 11.20am	21 Morning Yoga @8.00am Indonesian Class with traditional snack @9.00pm	22 Wayang Painting @4.00pm BBQ Dinner @4.30pm	23 Morning Yoga @8.00am	24 English Study Club @1.45pm	25
	28 Culter Night at Bojeng Park	29 BBQ	30	31 Movie Night	

Student Event Calendar



At SBI our student events create opportunities for students to build new friendships within the student community.

Student Memory Wall



“

At SBI our students love to leave a farewell comment to record their experience at SBI.

These inspiration comments are recorded on the student memory wall as a way to remember all of the wonderful students who have studied with us at SBI.

”

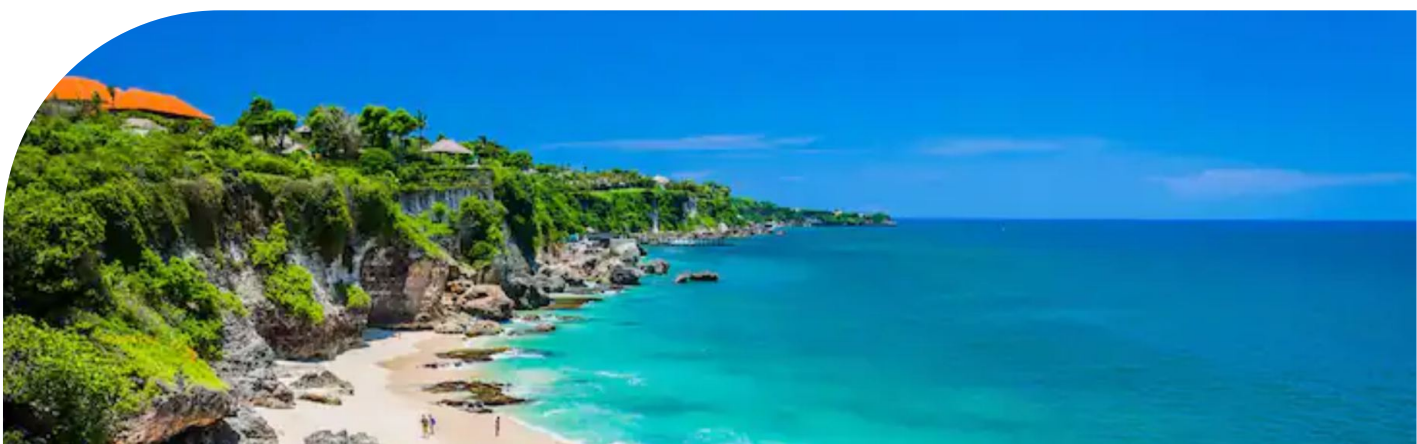
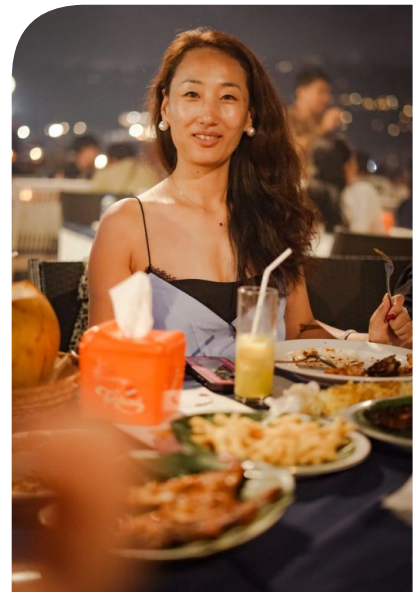
Discover Bali – Explore & Enjoy!

📍 Jimbaran, Badung Regency - Bali



SBI is located in Jimbaran, close to stunning beaches, world-famous surf spots & vibrant cultural sites like Uluwatu Temple. Students can also explore Canggu, Ubud, Seminyak & the Bukit Peninsula, known for their nightlife, shopping & scenic beauty. Jimbaran is famous for its seafood restaurants, cozy cafés & traditional markets, offering a taste of authentic Balinese life.

Muaya beach is only a few minutes by motorbike from SBI & is famous for sunsets & seafood dinners. There are also a wide range of local & international restaurants in the area as well as supermarkets, convenience stores & medical clinics.



Map of Jimbaran

📍 Badung Regency - Bali



Cuca Restaurant



Muaya Beach



Bella Seafood



Bulls Head Steak House



Rezha Surf School



La Brasserie



Sandpiper



Magal Korean BBQ



Calma Spa



Raya Jimbaran-Uluwatu St.



Warung Bu Oki

Bypass Ngurah Rai



Mc Donalds

SBI Learning Resort



Celaji Besar St.

Prabu Udayana St.

Raya Kampus Unud St.

Udana Yoga



What to do in Bali?

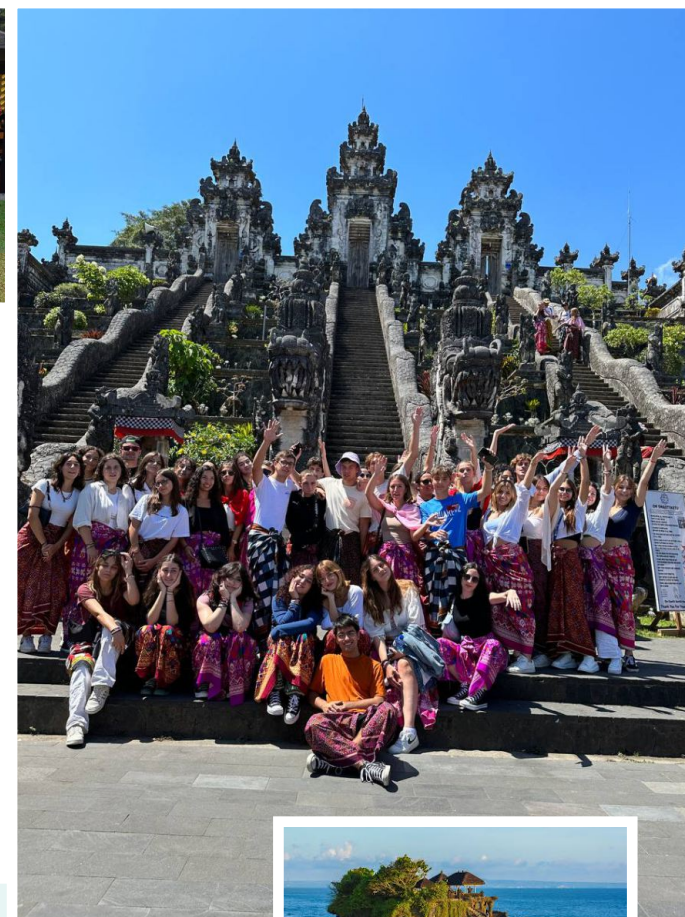


There is no shortage of things to do & magic destinations on the island of Bali & SBI students regularly plan afternoon activities & weekend getaways.

One huge advantage of Bali is that each part of the island has its own unique feel - from the party vibes of Canggu, the culture & scenery of Ubud, the bustling Seminyak shopping precinct, the booming Padang Padang restaurant scene & the surf culture of the Bukit peninsula - Bali has something for everyone.



Culture



The vibrant Balinese culture is one of the main attractions to Bali & the island's picturesque landscapes are dotted with ancient temples & terraced rice fields which offer a glimpse into Bali's rich heritage. In fact even the daily prayer offerings are visible at every step of your daily life in Bali.

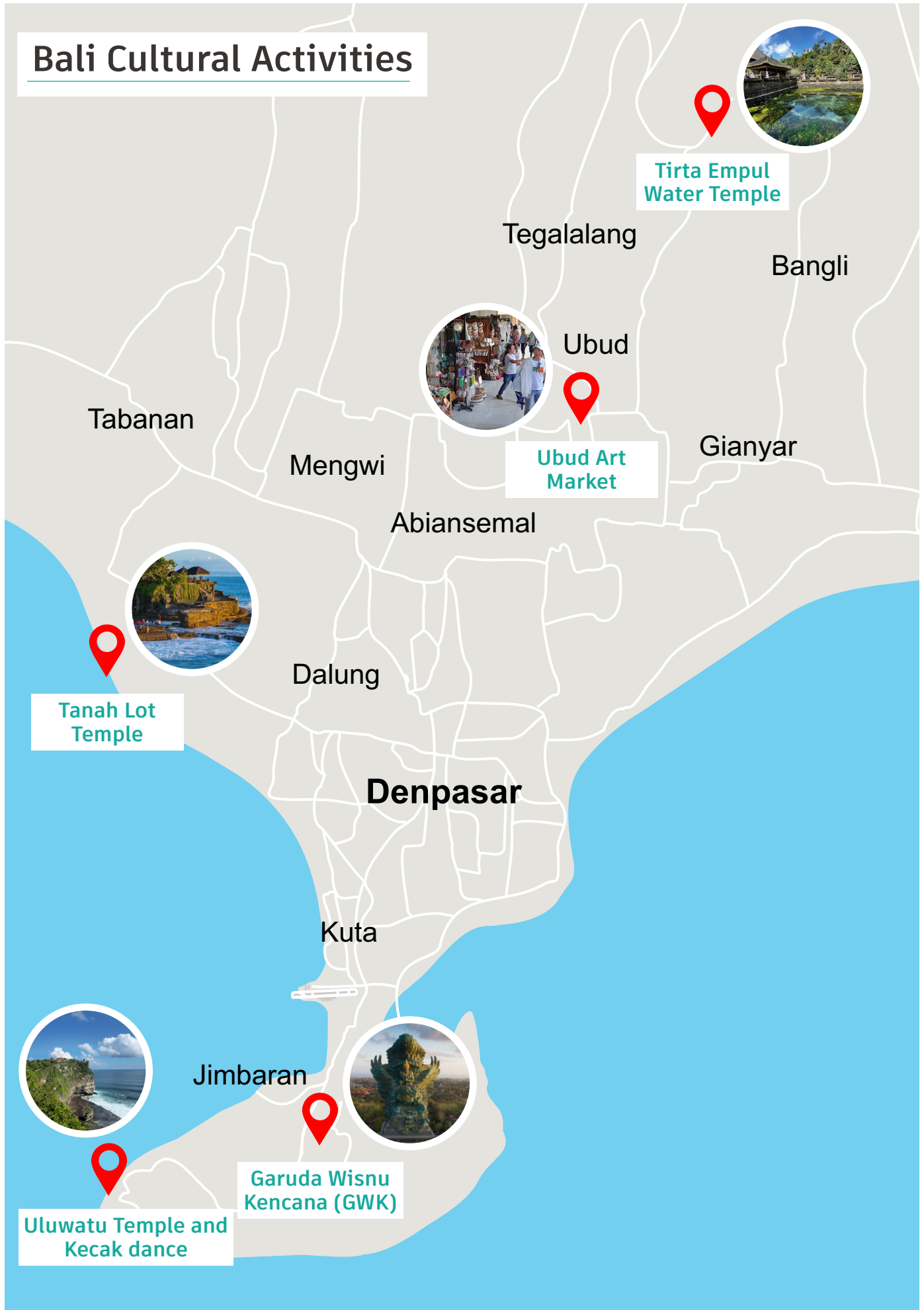
Bali's diverse terrain, from Ubud's terraced rice paddies to Uluwatu's stunning cliffs, offers limitless adventures & relaxation & the cultural diversity shines through Bali's art, architecture & rituals.

A recommended list of cultural sites & activities include:

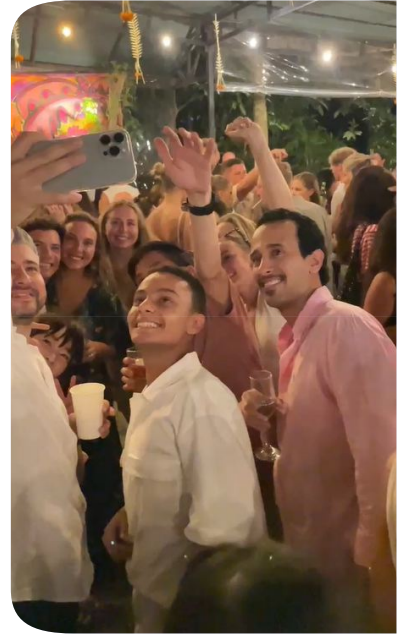
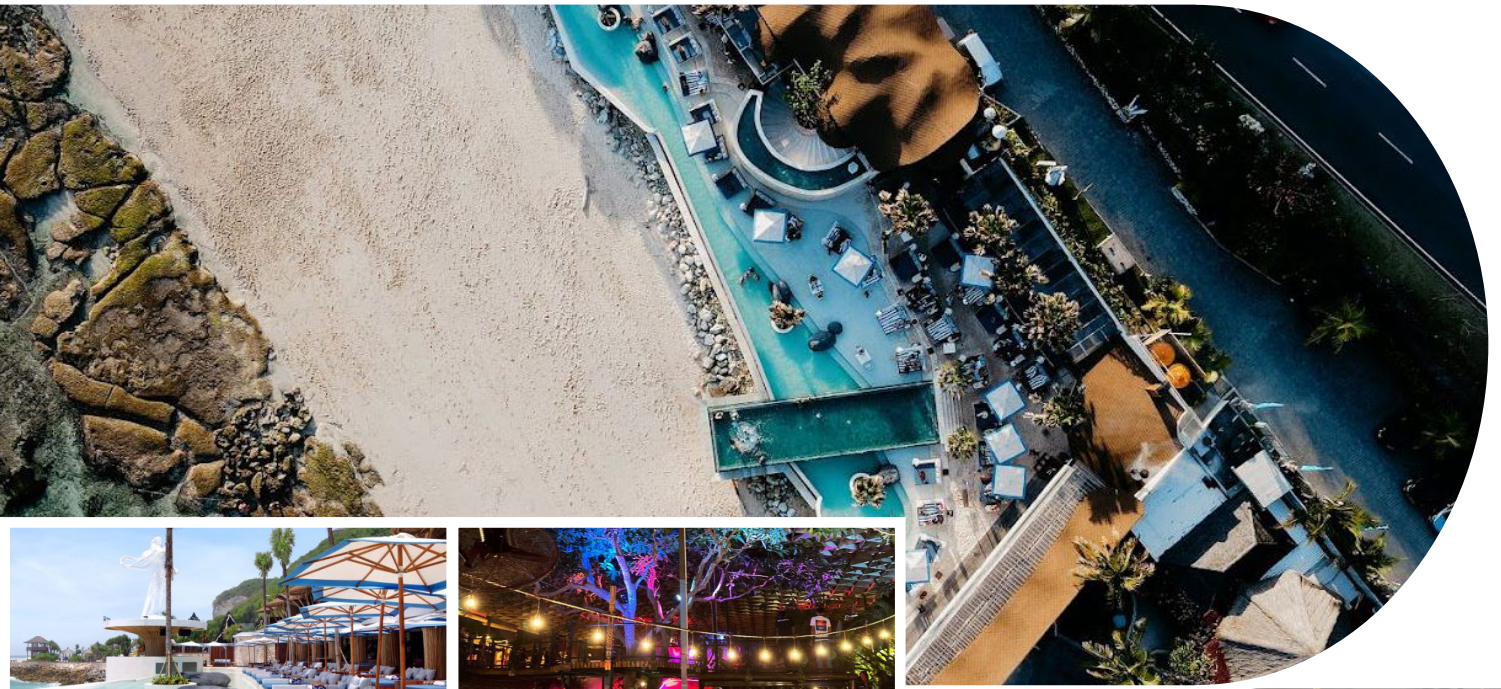
- ✓ Tirta Empul Water Temple
- ✓ Uluwatu Temple & Kecak dance
- ✓ Tanah Lot temple
- ✓ Ubud art market
- ✓ Garuda Wisnu Kencana Cultural Park



Bali Cultural Activities



Night Club & Beach Club Scene



Bali abounds with nightclubs & beach clubs which are perfect for students who wish to let their hair down after class & on the weekends. The Uluwatu area has a host of popular clubs such as White Rock, TT beach club, Single fin & Hatch nightclub & these places can easily be reached by car or motorbike from the SBI resort.

The famous Canggu area is about 60 minutes away (traffic depending) & is home to Atlas beach club which is considered a must visit. Canggu also has a host of other beach clubs such as Finns' beach club.

Students studying at SBI will certainly have no shortage of fun alternatives to enjoy their evenings & weekends in paradise.



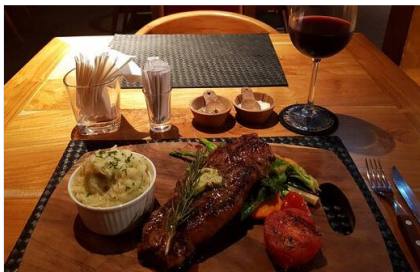
Cafes & Restaurants



There are a large range of restaurants close to SBI & students can choose from local 'Warungs' or more Western style food. Some popular eateries close to the school include:

- ✓ Sandpiper Bali
- ✓ Jimbaran seafood cafes by the beach
- ✓ Bulls Head Steak House (steaks & western meals)
- ✓ Warung Ibu Oki (Balinese chicken)
- ✓ La Brasserie (French restaurant)
- ✓ Cuca (Eclectic fine dining)
- ✓ Magal Korean BBQ

There is also a McDonalds restaurant less than 1km from the school.





Foodies wishing to seek out dining experiences need only travel up the peninsula to Padang Padang where there is a growing culinary scene. Recommended restaurants include:

- ✓ Suka Espresso
- ✓ Warung Lokal
- ✓ Ours Bali
- ✓ Alchemy Uluwatu
- ✓ Tarabelle Coffee and Eats
- ✓ Bali Buda
- ✓ Ulu Cliffhouse



Transport

Motorbike hire is possible upon request & students will need to show an international drivers' license to access bike rental from SBI.

Bike rental prices are provided upon request & based on the of length of rental period & the type of motorbike. All students should take care on Bali's roads.



Gojek (motorbike taxi) & **Grabcar** (online taxi) are popular transport alternatives for students who would prefer not to ride a motorbike & these are cheap & reliable alternatives.

The apps are easy to use & can be downloaded on arrival in Bali.

Testimonials



Fred (Thailand):

“ I studied at SBI for three weeks, and it was an amazing experience. I learned so much, gained new knowledge, and built great friendships. SBI is not only the perfect place to improve your English, but also to meet friends from many different countries and even learn about other languages and cultures.

I truly appreciate my time here and I'm so happy to have been part of this community. Hopefully, I will come back again to study with even more friends. Thank you, SBI!



Camilla (Italy):

“ I studied at SBI for one month, and I'm so happy I chose to come here. I met many wonderful people, enjoyed exploring Bali's temples and traditions together, and created unforgettable memories.

The teachers at SBI are amazing – supportive, professional, and inspiring. I truly loved my time here and I hope to come back one day!



Saba (Iran):

“ I'm an engineering student, and choosing SBI to learn English was one of my best decisions. After one month of studying, I feel more confident and fluent when speaking English.

What I really enjoyed were the activities—painting, hiking, cycling—where we practised English naturally with friends, even outside class. That made a big difference. SBI feels like a family to me, and I'm very grateful to all the teachers and the team. Thank you so much!



Jiesul (South Korea):

“ I stayed at SBI in Bali for two weeks and really enjoyed my time here. The best part was learning with native-speaker teachers who corrected my mistakes right away and helped me improve.

I also made new friends from different countries, and outside of class I enjoyed activities like yoga and surfing. Studying at SBI made my vacation even more special – I highly recommend it to anyone who wants to learn English while experiencing Bali!



Paul (France):

“ I spent three months at SBI, and I can say it's the perfect place to learn English while making new friends. The teachers are patient and take time to understand you, which really helped me improve.

I truly hope to come back again soon – SBI is a wonderful place to study English. Thank you!



SBI Language
Training

PANCA
MAHA
BHUTA

MEAN

2026 Course & Other Fees

BOOK FEES

Student workbook (Hard copy)*	USD 50
-------------------------------	--------

*Optional

COURSE PRICES

Global English Communication Programme USD 290 p/w

Includes:

General English:	15 hrs/week
English Conversation:	1 hr/week
Self Study Workshop:	1 hr/week
Professional English Skills Workshop:	2 hrs/week
Bahasa Indonesia Class:	1 hr/week

*) 1-week study bookings = USD 315

1-week stays at SBI Learning Resort are not permitted

PRIVATE TUITION (1-4 participants)*

5 hour study package with 100% native speaker USD 190

5 hour study package with 50% native + 50% non-native speaker USD 155

5 hour study package with 100% non-native speaker USD 125

*Private tuition packages are only available for students registered in General English

ACCOMMODATION (SBI LEARNING RESORT)

Pool view / Pool access room

Single Room USD 200* p/w

Twin Room USD 200* p/w

Additional room nights USD 30 p/n

- Airport pick up

Free for onsite students

* - Accommodation is only available for SBI students & accompanying friends or family staying in the same room.

- Minimum booking: 28 nights / 4 weeks.

- Check-in and check-out is on Sundays only.

- Additional room nights outside of study bookings are only permitted at Zuri Express hotel.

ADDITIONAL SERVICES & FEES

Breakfast Package (Mon - Fri): Standard, Halal & Vegetarian ala carte dishes USD 25 p/w

Weekend Trips & Excursions Prices vary

VISA support: C9 60-Day Student Visa + Maximum 2 x 60 day renewal USD 275 p/60 days

VISA support: Tourist VISA renewal. 1 x 30 day renewal USD 70 p/30 days

Airport pick up (free for students staying at SBI Resort / Zuri Express) USD 25

VIP Card Discounts at top restaurants, spas, & surf

Join Us at SBI!

Improve your **English**,
meet new **friends**,
and enjoy an unforgettable **experience**
in **Bali**.

SBI

Stay • Study • Enjoy

Celagi Basur Street No 5F, Jimbaran, Bali

☎ +62 823 4160 4831

✉ inquiries@studybaliinternational.com

📷 [@sbi_studybaliinternational](https://www.instagram.com/sbi_studybaliinternational)

www.studybaliinternational.com