



Stay • Study • Enjoy

## Bali Global English Camp

Stay • Study • Enjoy



# WINTER CAMP

**2026**

12th January -  
6th February

Join Bali's premium family camp in winter 2026 & embark on an educational adventure on the island of the Gods



**-Fun Outings-**  
Surfing  
Coral Planting  
Chocolate Factory  
Pottery Painting  
Bali Bird Park  
Turtle Conservation

Stay • Study • Enjoy

[www.studybaliinternational.com](http://www.studybaliinternational.com)





## About SBI

**SBI is the leading provider of education camps on the island of Bali. Since 2017, thousands of students have enjoyed our fully integrated stay & study programmes.**

We specialize in the delivery of English STEAM camps which we run during holiday seasons & we welcome children & accompanying parents from all over the world to enjoy learning in a Bali paradise environment.

SBI also delivers teenage study camps during school holiday periods & we welcome large groups from Europe & Asia for all-inclusive English training & leisure programmes.

SBI also has year-round adult language training services & we host students from countries as diverse as France, Italy, Spain, Switzerland, South Korea, Japan, China, Russia, Kazakhstan, Mongolia, Brazil, Columbia & Chile. These students stay & study together in an international community at SBI's purpose-built English Learning Resort in Jimbaran.

We invite you to join us in paradise to enjoy quality education & amazing Bali experiences under the guidance of SBI's experienced academic & service team.





## What is the Global English Camp?

**SBI's Global English Winter Camp is a 4-week family English & STEAM camp designed for families who want a unique, educational holiday in Bali.**

Children will improve their English in classroom language classes & through engaging in fun, hands-on STEAM activities connected to weekly themes. Parents can also participate in classes, relax, or work remotely while enjoying Bali.

SBI's Bali Global English Camp provides children & young teenagers (ages 4 years to 15 years) with the opportunity to develop English language skills & build new friendships in an immersion environment with classmates from a diverse mix of nationalities.

Students receive language instruction from SBI's native speaker camp teachers & then apply new language through completing motivating STEAM activities which see students working in teams to develop creative solutions & complete projects.

SBI Global English campers also enjoy the opportunity to explore Bali with regular outings & activities, such as surf lessons, coral planting, turtle conservation, a visit to Bali Bird Park, cooking classes & a visit to a chocolate factory.







Parents also enjoy their own light programme & can join yoga classes 2 times per-week. During the winter season, parents wishing to join English classes can book study days in adult classes & also register for activities such as parents' surfing classes, traditional Batik making & Balinese cooking classes.

The winter season at the Global English Camp sees families joining from countries such as South Korea, Japan, Taiwan, Mainland, Mongolia, Russia, Kazakhstan, Turkey & various European countries. The winter season generally sees greater nationality diversity with most classes being mixed nationality.

Families can elect to stay at the main study camp hotel, 5-star hotel **Movenpick Spa & Resort Jimbaran**, which is just 3 minutes away from SBI, or at the 4-star hotel option, **Four Points by Sheraton Ungasan**.

## Why Choose SBI?



- SBI is the leader in family **Edu-camps** in **Bali & Southeast Asia**, with **9 years of experience**.
- Our program combines **language learning, STEAM education, & cultural activities**, creating a well-rounded and immersive experience for **children & parents** alike.



## What Makes SBI Unique?



- **A Proven Leader:** SBI is a pioneer in family education tourism, with thousands of happy participants.
- **Holistic Learning Approach:** This camp blends English, STEAM, & real-world learning in a fun and engaging way.
- **International Environment:** We welcome families from across the world, creating the opportunity for the development of global friendships.
- **Bali's Premier Location:** Based in the beautiful Jimbaran area, just minutes from the beach & 3 minutes from the main 5-star resort partner.
- **Unforgettable Experiences:** Exciting activities, cultural immersion, & learning that goes beyond the classroom.
- **Official Education Permit:** SBI is fully licensed by the Indonesian government.
- **International School Campus:** SBI's primary school, Jimbaran Junior Academy, offers a permanent campus with Week 4's Immersion Week seeing cross-cultural learning with students joining from the regular primary school.



## SBI's Commitment to Safety



### Proven Track Record

SBI has a 100% safety record in running educational camps.



### Trained Staff

All staff are trained in child supervision & first aid.



### Secure Campus

SBI's junior campus provides a safe, enclosed environment for all activities.



### Medical Support

At SBI we have on-site medical clinic open 7 days a week & assistance available at all times.



### Dedicated Supervision

Small class sizes and low student-to-teacher ratios ensure personalised attention.



# Camp Teachers

Native English teachers teach predominantly the English language lessons, & some STEAM experiments.



## Vida

I am the Global English Camp Academic Leader and I am from Leeds in the UK. I have over 6 years experience teaching all ages in Thailand & Bali, & 5 years camp management experience. I have a Bachelor's degree in International Business, & a TEFL qualification.

I am always so excited for the study camps - they are the best part of my job! It's such a unique and special opportunity for us to spend time with students learning & having fun together in paradise.

I love how this camp brings people from different nationalities & cultures together.



## Jasna

Hi there, my name is Jasna Cameron. I have an Honors degree in Psychology. I also have a 160-hour TEFL certificate. My 2 great passions in life are teaching and languages. I love interacting with learners of all ages & across all cultures.

I teach with great enthusiasm. I enjoy making my lessons fun through songs & games with the youngest learners & by sharing my hobbies & interests like music, travel, sports, movies and books with the older students.



## Keryn

My name is Keryn & I am a qualified ESL teacher from Australia. I have a wide range of experiences that I bring to the table during Global English camps.

I use my life skills to ensure that children are comfortable and are in a good frame of mind to maximize their learning.





## Josh

A fully qualified TEFL teacher from Nottingham, UK. I have a Bachelor's degree & two years experience teaching in UK, Poland and Bali.

I have a background in sports & bring lots of energy, fun to the camp to make sure that all of my students leave with better English skills, and many happy memories.



## Molly

Hi, I'm Molly and I am from Australia. I studied at the University of Adelaide for my Bachelor's Degree in Psychological Science. I also hold a TEFL certificate.

As an academic tutor in Australia I have taught students up to Year 12 level in English, Maths and Science. I absolutely love teaching & sharing my knowledge with others.

My first priority as a teacher is always to ensure that everyone is supervised & safe, followed by ensuring everyone is having a fun time while learning!



## Georgina

Hi I'm Georgina, from England. I have a First Class Bachelor of Arts Honors Degree with a High Distinction from Newcastle University in English Literature And Creative Writing and a 120-hour Teaching English as a Foreign Language Certification.

I specialize in performing arts & bring that energy to my teaching, encouraging my students to be confident as they improve their English speaking skills.

Learning with me on the Global English Camp will be educational, & engaging, & leave happy memories for a lifetime.



Local Indonesian English teachers teach predominantly the STEAM activity lessons, some cultural activities and English language lessons.

## Willy

I am a Trinity College CertTESOL-certified English teacher with over four years of experience in teaching Cambridge IGCSE and A-Level Business Studies & English Language. I started the teaching journey in 2007 as an English teacher, then advanced to a lecturer assistant in 2010 while also teaching at an Indonesian National Plus School.

I was promoted to lecturer in 2013 & pursued a master's degree from 2015 to 2018. After moving to Bali in 2018, I completed a Trinity CertTESOL, & since then, have been teaching international students. These diverse experiences have developed flexibility, patience, empathy, and effective communication skills.

## Yayang

Hi, I'm Yayang! I'm a CELTA-certified English teacher with over 10 years of experience helping students build confidence in English. I hold a Bachelor's degree in English Education & a Master's degree in Linguistics.

Having background in TEFL and TESOL, I strive to make learning both professional & fun. My goal is to create an engaging & supportive environment where students can develop their language skills naturally and enjoy the process!

## Agnes

Hello there, I'm Agnes. I've been teaching English for more than 17 years. I hold a Bachelor's degree in English Education and I've become an English teacher since then.

I've got extensive experience in teaching different levels from kids to adult classes, including exam preparation courses & in house training projects. As a CELTA-certified teacher, I always give the best of me to the development of the English language teaching. For me, learning English has to be fun and engaging. I love sharing my knowledge and help my students reach their goals. My true happiness is when seeing my students succeed in developing their English skills.





# English Language & S.T.E.A.M Component

## S.T.E.A.M

**Science. Technology. Engineering. Art. Maths**

SBI's STEAM educators guide students to activate new language in order to complete tasks, projects & solve problems in a team-orientated learning environment - through this approach to language acquisition students are motivated to use English in a real & practical way.



### Why S.T.E.A.M ?

STEAM experiments involve two or more standards from Science, Technology, Engineering, Art & Maths to be taught through each other. This blended learning approach encourages creative minds to think outside the box, see things from different perspectives, & use tools and materials in new ways & stimulates the use of English.

Students of any English level can follow this camp, & can learn, grow, and achieve a development outcome that they can be proud of.



# Student Engagement

Engaging young minds is at the heart of what we do at Global English Camp. We have developed a dynamic approach to ensure that learning is not only educational but also enjoyable, leaving a lasting impact on our camp participants.



## Activity Badges: Celebrating Achievement

Every child deserves recognition for their efforts. That is why, at the Global English Camp, we award activity badges for each activity undertaken. These badges, proudly displayed on a sash, showcase a diverse range of skills and achievements, fostering a sense of accomplishment and motivation for all students.

## Merit Badges: Celebrating Excellence

Exceptional behaviour deserves special acknowledgment & SBI teachers award merit badges to students who exhibit outstanding behaviour – this encourages a positive classroom atmosphere & reinforces the importance of good conduct.

## Sticker Projects: Learning Made Fun

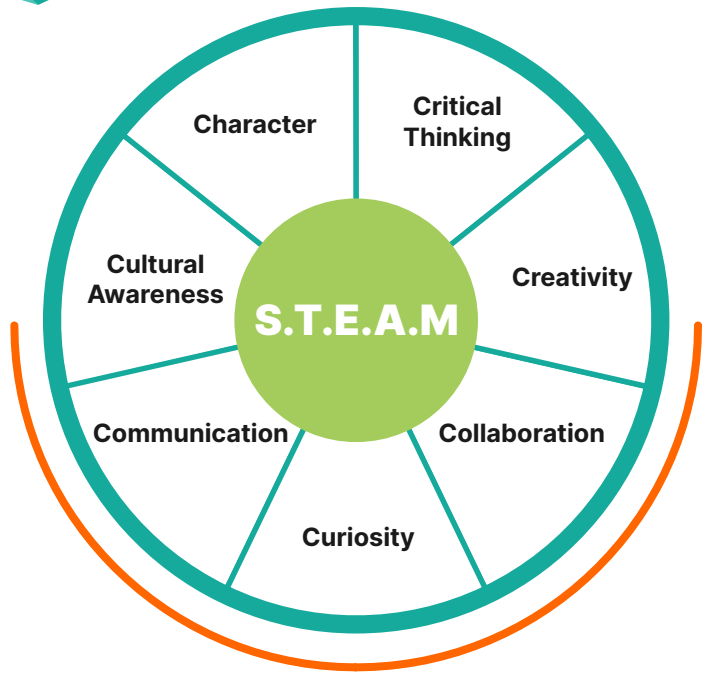


Learning is an adventure, and our weekly sticker projects add a touch of creativity to the educational journey. These projects not only consolidate the week's lessons but also provide a fun, hands-on experience and a learning record that students can proudly take home, sharing their newfound knowledge with family and friends.





# The 7C's of Student Development



- 1 Character:** Through teamwork & problem solving, students can become well-rounded, respected individuals with a global perspective.
- 2 Critical Thinking:** Unique, open-ended learning experiences encourage students to be innovative problem-solvers, rather than followers.
- 3 Creativity:** Project-based learning gives students the chance to unleash their creativity in ways that are new to them, with no limits.
- 4 Collaboration:** Through group work and dialogue, students learn that together anything can be achieved, whereas alone.
- 5 Curiosity:** Curiosity is the key to problem-solving, and through opening young minds, it creates opportunity, empathy, & growth.
- 6 Communication:** Speaking English with peers & teachers from around the world, & practicing presentation skills, students can become presentable & confident English speakers.
- 7 Cultural Awareness:** Immersing in a different culture opens the mind & hearts of students to new perspectives & broadens awareness of other cultures.



# SBI English Exploration Workbook

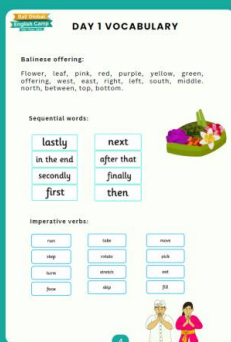
**The English Exploration Workbook** is the key learning tool on the Global English Camp & is a proprietary learning guide developed by the SBI team for use on SBI Global English Camps.

The workbook is used by students to record new language, work on class projects, complete fun sticker activities & to note achievements.

The English Exploration Workbook serves as a roadmap for academic progress & also as a reflection of students' growth & accomplishments throughout the camp. It also allows parents to track the learning journey of their children through the camp.



## Take a look inside the guide







# Camp Schedule & Weekly Themes



## Week 1 - Sustainability Week

 12th – 16th January 2026

Learn about recycling, renewable energy, and eco-friendly solutions through interactive English & STEAM projects.



## Week 2 - Eco-adventure Week

 19th – 23rd January 2026

Explore Bali's nature, marine conservation, & outdoor challenges while applying English in real-world settings.



## Week 3 - The Wonders of Nature Week

 26th – 30th January 2026

Discover biodiversity, wildlife conservation, and creative nature-inspired projects through English-led exploration.



## Week 4 - Social Enterprise Week

 2nd – 6th February 2026

A special highlight where camp participants integrate with Jimbaran Junior Academy students, collaborating on projects & creating a Farmer's Market event together.

Immersion with  
**Jimbaran Junior Academy**

# General Schedule v.1.1



## Week 1 - Sustainability Week 12<sup>th</sup> - 16<sup>th</sup> JANUARY 2026

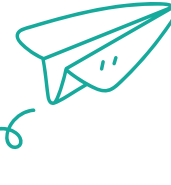
Monday	Tuesday	Wednesday	Thursday	Friday
<ul style="list-style-type: none"> <li>Welcome to Camp &amp; Introductions</li> <li>Balinese Offering Activity</li> <li>Hydroponic Farming + Artisanal Pizza Making</li> <li>Introduction Games / Getting to Know You / Wh questions                             <ul style="list-style-type: none"> <li>Lunch Break</li> </ul> </li> <li>Lesson Useful Phrase: Hygiene and Habits</li> <li>Introduction to Bahasa Indonesia Language</li> </ul>	<ul style="list-style-type: none"> <li>Coral Planting</li> <li>Scavenger Hunt &amp; Live Ocean Biome                             <ul style="list-style-type: none"> <li>Lunch Break</li> </ul> </li> <li>Language Lesson - Marine Life &amp; Ocean Conservation</li> <li>STEAM: Protecting Our Waterways Trash Barrier Engineering Project</li> <li>English Grammar and Conversation/English Activity Night + Dinner</li> </ul>	<ul style="list-style-type: none"> <li>STEAM: Save Our Planet Creative Conservation Project</li> <li>STEAM: Jungle In a Bottle Ecosystem Project                             <ul style="list-style-type: none"> <li>Grammar Clinic</li> </ul> </li> <li>STEAM: Batik Dyeing Education Session + Practical Dyeing Make a Batik Design T-shirt                             <ul style="list-style-type: none"> <li>Lunch Break</li> </ul> </li> <li>Language Lesson - The Water Cycle</li> <li>STEAM: Water Filtration Experiment</li> </ul>	<ul style="list-style-type: none"> <li>Beach Clean Up</li> <li>Surfing at Jimbaran Beach                             <ul style="list-style-type: none"> <li>Lunch Break</li> </ul> </li> <li>Language Lesson - The Language of Sustainability</li> <li>STEAM: Habitat Loss Erosion Experiment</li> <li>English Grammar and Conversation/English Activity Night</li> <li>Camp Dinner &amp; Student Performances</li> </ul>	<ul style="list-style-type: none"> <li>Sports Day Challenge</li> <li>Review Language of the Week                             <ul style="list-style-type: none"> <li>Lunch Break</li> </ul> </li> <li>Presentation Preparation + Final Presentations</li> <li>Graduation Ceremony</li> </ul>



## Week 2 - Eco-adventure Week 19<sup>th</sup> - 23<sup>rd</sup> JANUARY 2026

Monday	Tuesday	Wednesday	Thursday	Friday
<ul style="list-style-type: none"> <li>STEAM: Marbled Stone &amp; Treasure Pouch Decorating</li> <li>STEAM: Build a DIY Compass / Language - Directions and Magnetics</li> <li>STEAM: Prepare the Magic Invisible Ink Treasure Map                             <ul style="list-style-type: none"> <li>Lunch Break</li> </ul> </li> <li>Inter Class Scavenger Hunt Challenge</li> <li>STEAM: Crafting Music Speakers</li> </ul>	<ul style="list-style-type: none"> <li>Outing: Tour of Jungle Gold Chocolate Factory                             <ul style="list-style-type: none"> <li>Lunch Break</li> </ul> </li> <li>Language Lesson - The Science of Forces and Motion</li> <li>STEAM: Engineering Challenge - Build a Raft To Transport Materials</li> <li>English Grammar and Conversation/English Activity Night + Dinner</li> </ul>	<ul style="list-style-type: none"> <li>STEAM: Make a Butterfly Feeder                             <ul style="list-style-type: none"> <li>Grammar Clinic</li> </ul> </li> <li>Language Lesson - The Language of Sustainable Ecosystems</li> <li>STEAM: Construct a Live Ecosystem in a Glass Terrarium                             <ul style="list-style-type: none"> <li>Lunch Break</li> </ul> </li> <li>Language Lesson - Renewable Energy</li> <li>STEAM: Wind Turbine Design Challenge</li> </ul>	<ul style="list-style-type: none"> <li>Outing - Bali Zoo Adventure                             <ul style="list-style-type: none"> <li>Lunch Break</li> </ul> </li> <li>Language Lesson - Sturdy Bridge Construction Engineering Design Challenge</li> <li>STEAM: Engineering Challenge - Build a Raft to Transport Materials</li> <li>English Grammar and Conversation/English Activity Night</li> <li>Camp Dinner &amp; Student Performances</li> </ul>	<ul style="list-style-type: none"> <li>Inter Class Bridge Strength Competition</li> <li>Grammar Clinic</li> <li>STEAM: Colour Changing Potion Experiment</li> <li>Review Language of the Week                             <ul style="list-style-type: none"> <li>Lunch Break</li> </ul> </li> <li>Presentation Preparation + Final Presentations</li> <li>Graduation Ceremony</li> </ul>





## Week 3 - The Wonders of Nature Week

26<sup>th</sup> - 30<sup>th</sup> JANUARY 2026

### Monday

- Construct a Paper Seedling Pot from Recycled Paper
- Language Lesson - Seed Dispersal Theory
- STEAM: Seed Dispersal & Air Resistance Experiments
- Lunch Break
- Air Resistance Competitions - Constructing Parachutes
- Inter Class Air Resistance Competitions

### Tuesday

- Outing - Explore Bali Bird Park
- Bali Rainforest Free Flight Bird Show
- STEAM: Birds of the World Fact File Poster Project
- Lunch Break
- Plant a Seedling in The Recycled Paper Pots
- English Grammar and Conversation/English Activity Night + Dinner

### Wednesday

- STEAM: Grades 1 - 3: Science is Magic
- Grammar Clinic
- Language Lesson All Grades: Weather Watching - Atmospheric Pressure and Rainfall
- STEAM All Grades: Make a Barometer & a Rain Gauge To Measure Air Pressure and Rain Fall Levels
- Lunch Break
- Language Lesson - Animal Habitat / Describing Different Habitats and How They Sustain Life
- STEAM: Animal Habitat Diorama Projects

### Thursday

- Surfing at Jimbaran Beach
- STEAM: Build a Bird Feeding Station
- Lunch Break
- Volcano Construction & Eruption Experiment
- English Grammar and Conversation/English Activity Night
- Camp Dinner & Student Performances

### Friday

- Grammar Clinic - Adjectives of Nature
- Language Lesson: Adjectives of Nature
- Nature Scavenger Hunt To Practice Describing with Descriptive Adjectives
- Review Language of the Week
- Lunch Break
- Presentation Preparation + Final Presentations
- Graduation Ceremony



## Week 4 - Social Enterprise Week

2<sup>nd</sup> - 6<sup>th</sup> FEBRUARY 2026

Immersion with  
**Jimbaran Junior Academy**

### Monday

- Money and Measuring Language Review
- The Concept of Social Enterprise & Designing and Describing a Profitable Concept
- Language of Sales & Buying / Farmers Market Role Play
- Lunch Break
- Language Lesson - Sounds of Nature
- STEAM: Making Musical Instruments with Natural & Recycled Materials

### Tuesday

- Outing: Jenggala Pottery Factory Tour and Ceramic Mug Painting
- STEAM: Arts & Craft Product Design at SBI Learning Resort
- Lunch Break
- Language Lesson - Marketing Strategy
- STEAM: Designing a Marketing Campaign and Poster
- English Grammar and Conversation/English Activity Night + Dinner

### Wednesday

- STEAM: Spaghetti & Marshmallow Tower Construction & Sand Pendulum Art
- Grammar Clinic
- STEAM: Building The Sales Booth
- Language Lesson - Describing the Process of "Garden To Table" & Making a Poster
- Lunch Break
- Design & Make a Quality Product for the Farmers Market

### Thursday

- Outing - Turtle Island Conservation
- Lunch Break
- Product Packaging Design Using Natural Materials
- Engineering Challenge - Build a Raft to Transport Materials
- English Grammar and Conversation/English Activity Night
- Camp Dinner & Student Performances

### Friday

- Sales Booth Preparation / Language Review / Role Practice
- SBI Camp Kids Farmer's Market Bazaar
- Prepare Final Product Report & Presentation
- Lunch Break
- Presentation Preparation + Final Presentations
- Graduation Ceremony





## SBI Learning Resort & Junior Campus

All Global English Camp classes take place at the SBI English Learning Resort venue which includes the adult campus & the junior campus & is Bali's only purpose built resort venue for international English learners.

The SBI Learning Resort is set on 2,400 square meters of land & the junior campus is the perfect education venue for SBI's camp students to enjoy this immersive learning experience.

SBI's junior campus is also the home of Jimbaran Junior Academy (JJA) which is an international standard primary school & the Global English Camp takes place during the primary school holiday period.





# English & STEAM Learning



All English language classes are taught by experience & qualified SBI native-speaker teachers.

STEAM activities are led by qualified Indonesian primary school teachers who focus on hands-on, creative problem-solving linked to weekly themes.

Camp classrooms are purpose built for a collaborative learning approach & multimedia facilities allow SBI camp teachers to deliver classes

with the multi media facilities that teachers use to maximize student learning potential on the camp.


Parents who book the adult English study programme will also travel to the SBI Learning Resort and enjoy mixed nationality English classes with SBI's regular adult students.



## ● Suitable for All English Levels

**SBI Global English Winter Camp is designed for both beginners and advanced English speakers.** Children are placed in classes based on three key factors:

- **Age & school grade:** Ensuring appropriate learning methods and activities for different age groups.
- **English level:** Grouping students to match their proficiency, allowing for better progress.
- **Nationality:** We encourage mixed-nationality classes to promote cultural exchange & develop confidence in using English in a diverse environment.


$$1+1=2$$

## Class Arrangement | Kindergarten Programme



SBI's kindergarten programme for children ages 4 & 5 years offers a nurturing environment tailored to the developmental needs of very young learners, with a focus on language immersion & sensory-rich activities, in shorter, sharp, & more focused time frames than the older classes. Each day starts with Circle Time, encouraging group interaction & early language skills.

STEAM projects are designed with hands-on simplicity in mind, such as Canang Sari Craft and treasure making, promoting fine motor skills and creativity.

Daily routines also integrate mindfulness & yoga, promoting physical coordination & emotional well-being.

The program concludes each day with Story Time, a perfect way to settle after a day of engaging, age-appropriate activities. The kindergarten programme blends structured learning with playful discovery, providing a gentle introduction to STEAM & language development in a fun, supportive setting.





## Class Arrangement | **Grades 1-3**



Our programme for grades 1-3 builds on foundational learning with more advanced STEAM challenges & environmental exploration.

Children at this level are inspired to be curious & apply their growing problem-solving skills in projects like Trash Barrier Engineering & Wind Turbine Design, where they learn to connect theory with hands-on practice combined with language production.

Inspiring creativity plays a key role, with activities like Butterfly Feeder Making & Nature Collage helping students express their ideas visually, & even those that are not as strong in their English-speaking skills can still create and achieve.

Every Tuesday & Thursday afternoon is English Activity time where students can relax & create whilst developing their English language communication skills. Each week culminates in presentations, where campers build confidence by sharing their projects with peers.

This program encourages curiosity & environmental responsibility, combining learning with fun in a way that challenges elementary students to think critically while enjoying group collaboration.



## Class Arrangement | **Grades 4+**

Grades 4+ programme offers more complex STEAM projects & experiences that challenge students' cognitive and collaborative abilities.

Campers engage in sophisticated activities like geodesic dome construction & hydroponic farming, delving deeper into scientific concepts & environmental sustainability.

Outings such surf lessons and coral planting allow students to expand their horizons, connect with nature & enjoy hands-on participation in healing the natural world.

Each week are two Grammar Clinic sessions, where students have the opportunity to develop their grammar and functional English skills to improve their overall English-speaking fluency.

This programme is designed to promote critical thinking, leadership & self-expression through group projects & presentations. By balancing advanced STEAM projects with real-world language application, this program prepares older students for more independent learning, teamwork & responsibility.



# Exciting Bali Activities



Outings on the Bali Global English camp combine fun with educational experiences that broaden young minds & provide exciting opportunities for students to enjoy their holiday & bond with new friends.

The class content and activities have also been developed in line with activities, so learning is a constant and natural process. At SBI we believe learning happens when you're enjoying yourself!



## Turtle Conservation

Social Enterprise Week

On the turtle island conservation center outing students will travel by glass bottom boat & enjoy feeding an array of tropical fish. Students will have the opportunity to see rescued sea turtles & will learn how to care for injured turtles as well as the rehabilitation process leading up to release.

## Coral Planting for Ocean Conservation

Sustainability Week

Replanting the coral reefs of Bali is a critical environmental activity & in this year's winter camp students will have the opportunity to visit the Pandawa coral reef restoration project for an education session & their own memorable experience naming and planting their own piece of living coral back into the reef.



## Surf Lessons

Sustainability Week

Bali is one of the best places to learn to surf and SBI's surfing lessons are based at the beginner-friendly Jimbaran beach.

Most participants will successfully stand & ride waves on the first day & this is a great introduction to the world of surfing.





## Bali Zoo

 Eco-Adventure Week

Bali Zoo is the home to animals from around the world & they are housed in an open setting allowing for great viewing & interaction.

On this outing students engage in a zoo scavenger hunt & are tasked with completing their own animal checklist & descriptive language challenge.



## Chocolate Making

 Eco-Adventure Week

Students on the Global English Camp also get to try their hand at chocolate making on a visit to Jungle Gold Chocolate Factory. Here students will learn about the process of chocolate making & mould their own chocolate bar to take home as a souvenir.



## Pottery Painting

 Social Enterprise Week

On this outing students will learn about the process of making pottery from start to finish and will follow this with a pottery painting session. The finished pottery pieces will, after undergoing a heating & drying process, be presented to kids so that they can take this souvenir home as a reminder of their Bali pottery experience.

## Visit to Bali Bird Park

 The Wonders of Nature Week

At Bali Bird Park students compete in a bird race to find key species & then marvel at the spectacular Bird Shows. Bali Bird Park also has an amazing Cinematic Migration Experience that kids can enjoy.

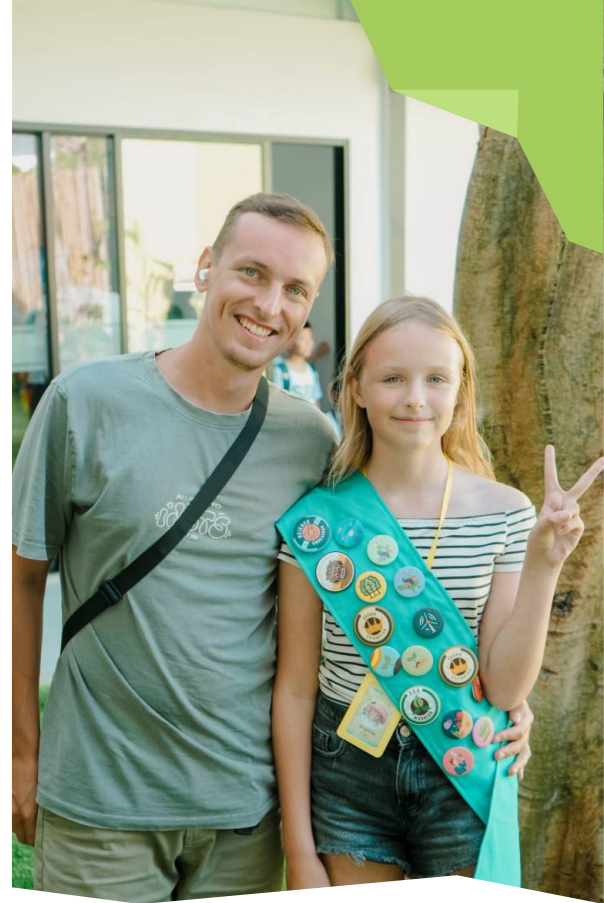




# Why is Bali perfect for a family English camp?

**Bali is a truly international destination and people travel from all over the world to enjoy the amazing weather, beaches, food & culture.** Bali is also an extremely safe place and this makes it an ideal environment for families to relax and feel secure.

The uniqueness of Bali & the variety of different attractions allows us to deliver a highly stimulating programme for children & parents that combines learning with a range of cultural and exciting experiences.



SBI's core education team is based in Bali & as an Indonesian owned company with international staffing & expertise, we are able to provide high quality education & support services that are of an international standard but stay true to the spirit of Bali.





## Accommodation Partners on the Bali Global English Camp **Mövenpick Resort & Spa Jimbaran**

This winter, SBI has partnered with The Mövenpick Resort & Spa Jimbaran to host our Global English Camp families and this 5-star resort is just 3 minutes by shuttle from SBI.

The Movenpick Resort & Spa is a tropical haven in the heart of Jimbaran with a large, child friendly swimming pool & the beach can be accessed via a short 2-minute walk from the back of the resort.

The resort kids' club is an expansive exploration and play area and is open to 6pm daily providing parents with additional child-minding options after the daily camp check out. Parents can also take advantage of the luxury spa at Movenpick and enjoy a 10% discount with their SBI VIP card.

The resort is located next to the popular Samasta Mall and this allows families easy walking access to a range of different restaurants, cafés & shops located within side the mall. Many of these restaurants, including Magal Korean BBQ, also provide VIP discounts to SBI Global English Camp families.

### **Services & Facilities**

- Swimming pool
- Restaurants
- Resort wide Wi-Fi
- Air conditioning
- Bath tub in every room
- Breakfast
- Massage services & spa
- Parking
- Fitness center
- Bar
- Kids' club
- Room services
- Wheelchair accessible
- Beach access
- Beach buggy



SBI camp families can select from a selection of different room types:

## Classic Room Garden View

38 m<sup>2</sup> · 3 x

- ✓ Bath tub
- ✓ High speed internet
- ✓ Coffee/tea making facilities
- ✓ Ironing board and flat-iron
- ✓ Direct dial telephone
- ✓ Mini Bar

## Classic Room Pool View

38 m<sup>2</sup> · Pool side · 3 x

- ✓ Bath tub
- ✓ High speed internet
- ✓ Coffee/tea making facilities
- ✓ Ironing board and flat-iron
- ✓ Direct dial telephone
- ✓ Mini Bar

## Junior Suite

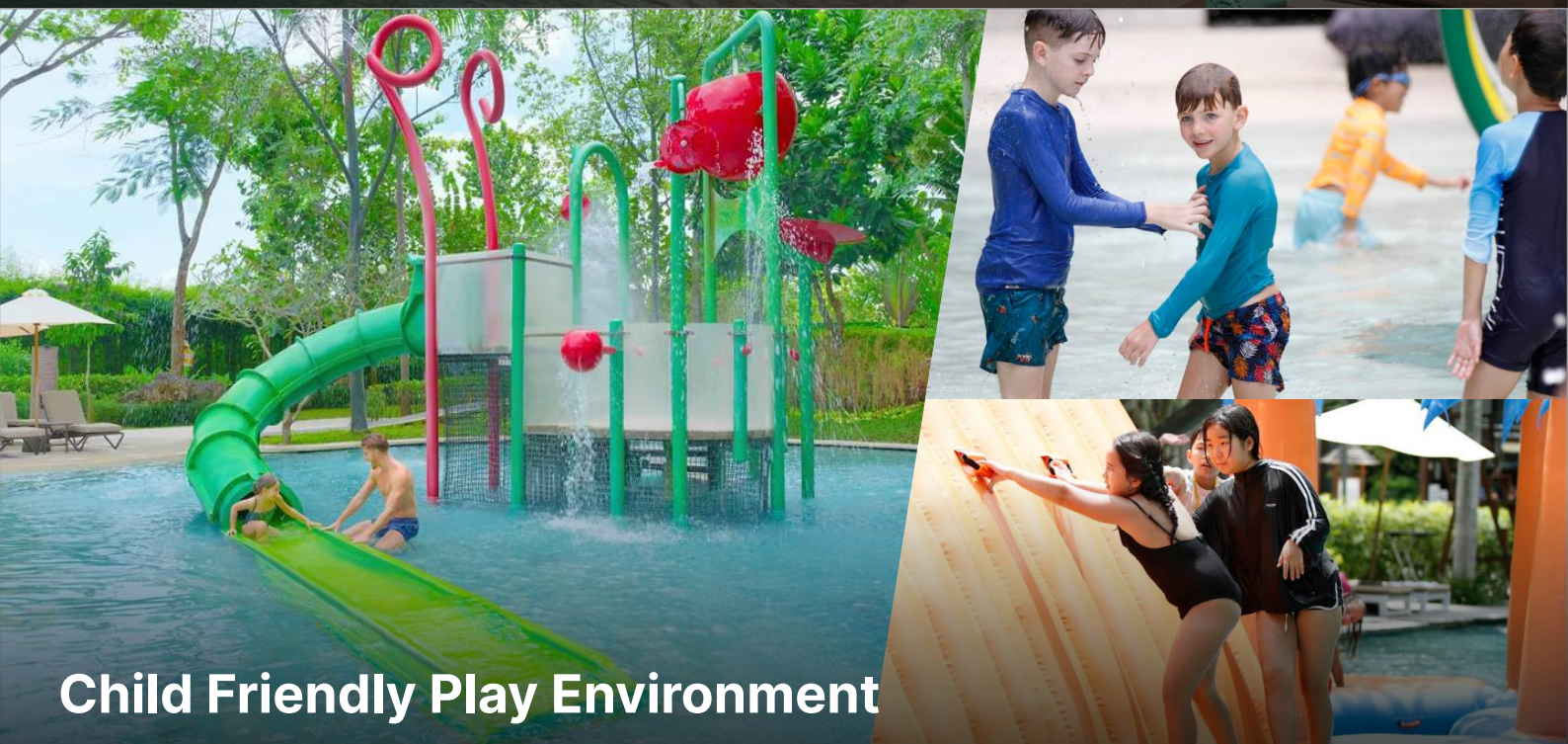
58 m<sup>2</sup> · Pool side · 3 x

- ✓ Bath tub
- ✓ High speed internet
- ✓ Coffee/tea making facilities
- ✓ Ironing board and flat-iron
- ✓ Direct dial telephone
- ✓ Mini Bar





**Sandy Beach Pool**



**Child Friendly Play Environment**



**Kids' Club**





**Fitness Centre**



**Restaurant**



**Enjoy breakfast before class**





**Luxury Spa**



**JeJaLa Pool Bar**



**Movenpick Café**





## Samasta | Lifestyle Village

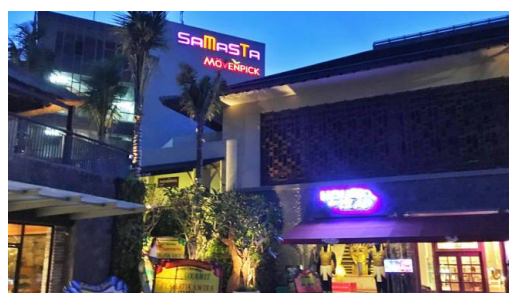
Samasta Lifestyle Village is right next to Movenpick Resort and Spa and is a great place for camp families to relax & enjoy dinner at the end of the day.

Every evening at around 7pm there are traditional Balinese dancing performances in the main square. This provides a great atmosphere as people gather around to witness the magic of the Barong dance.

Samasta also hosts a great selection of restaurants & cafes which provide a wide variety of Asian and Western eating options.

These restaurants include:

- Magal Korean BBQ **\*10% discount with SBI VIP card**
- Adriana Cocina & Bar **\*10% discount with SBI VIP card**
- Foek Lam (Chinese food)
- Pho Thin (Vietnamese food)
- Warung WAHAHA (Balinese pork ribs)
- Barrels Steakhouse
- Bebek Bengil (Balinese duck)
- Movenpick Café **\*10% discount with SBI VIP card**
- Gaya Gelato







# Four Points by Sheraton Ungasan

SBI is also partnered with Four Points by Sheraton Ungasan. This venue provides a quality & affordable accommodation option for SBI Global English camp families.

Four Points by Sheraton has spectacular views over Jimbaran Bay & the standard room type form Global English Camp Families is the Deluxe Bay View room.



SBI has a close working relationship with the management of both camp hotel partners & we work together to make camp families as comfortable as possible.

## Services & Facilities

- Restaurant
- Two swimming pools
- Open garden
- Wi-Fi
- Massage services & spa
- Gym
- 24 hour security



# Thursday Camp BBQ Dinner & Class Performances



SBI's famous camp BBQ dinner will see students & parents relax & enjoy a night of great food, entertainment, & conversation where SBI directors & chefs cook up a delicious selection of BBQ meats & side dishes for camp families.



The camp dinner takes place in the SBI Learning Resort garden & camp class groups will also perform their favourite songs & dances to the whole camp & enjoy great times.

The camp dinner is included in the programme for all parents & children following the camp. SBI provides a shuttle bus for all camp families to travel to & from the camp resorts for the BBQ event.



# Parents' Activities

Parents on the Global English Camp receive 2 x per week Yoga classes inclusive in the camp package. Yoga classes take place at both Movenpick or Four Points Resort.

## Yoga Classes (Tuesday and Thursday: 9.30am - 11.00am)



Yoga classes are led by SBI's experienced yoga instructor. This is a great way for parents to improve their physical & mental health & to enjoy health benefits while on the camp.

Yoga classes take place at both Movenpick or Four Points Resort.

## Optional Adult English Classes (Minimum 3 hours x 2 days per week)

Parents who wish to book English classes will follow General English classes at the SBI resort together with students from a range of different nationalities. Parents will need to take an online placement test in advance of arrival in Bali & will be placed in the correct level.

A minimum 2 x per week study booking is required & parents can also add additional study days if they want to focus on developing their English skills while on Bali.

Parents will travel to & from the SBI English Resort by shuttle to attend classes.



English classes schedules:

**Monday & Wednesday:**  
**9.30am-11.00am & 11.15am-12.45pm**  
or  
**Tuesday & Thursday:**  
**9.30am-11.00am & 11.15am-12.45pm**





# Parents' Optional Extra Activities



## **Saturday Surf Club** (Max 30 pax)

The SBI Surf Club is a favourite activity on the Global English Camp & provides an additional opportunity for surfing in Bali.

The Surf Club is open for parents & kids to join together and is inclusive of 1-hour private surf lesson, surf photos, transport to beach + drinks. It is also possible for parents to register kids on their own without a guardian.



## **Balinese Cooking Class** (Maximum 12 participants)

Parents, under the guidance of a Balinese chef, will learn to make some traditional favourite Balinese dishes such 'Sate Lilit' and 'Ayam Betutu' and will then enjoy a delicious feast together with other parents.



## **Batik Making + Traditional Tea & Snacks** (Maximum 12 participants)

Parents are guided by an experienced Batik artist to create their own design on batik design on a traditional cloth scarf which will be a lasting keepsake of their trip to Bali.

Traditional Indonesian teas & snacks will be served during the Batik Making Session.



## SBI Camp Services

In order to ensure that camp families have an easy experience in Bali, SBI provides a range of essential camp services.

SBI's service team is onsite at Movenpick & Four Points by Sheraton throughout camp period to assist families & make their stay as comfortable as possible.

- SIM Card
- Camp Medical Doctor
- Camp Bus Shuttle
- Daily Laundry Service

### School Clinic & Camp Doctor



SBI works closely with UNICARE clinic, & during the camp, we have a doctor based at the school. If children are sick during class time, they will be cared for onsite at the school clinic, and parents will be informed about their child's condition.

The camp doctor speaks both Korean & Chinese languages and is on call after camp hours to assist families that may require a doctor's visit in the evening or on the weekend.



# SBI VIP Card



Each Global English Camp family will received a welcome pack including a SBI VIP card when they arrive. This card entitles SBI guests to discounts & special benefits at a selection of SBI partner vendors which include a range of restaurants, cafes, beach clubs, salons & spas.

This card is unique for Bali and exclusive for SBI guests and allows our camp families to enjoy some of the best local services in the local area at special prices and with elevated service levels.



Special Gift

**Cuca Restaurant**



10%

**Bulls Head  
Steak House**



10%

**Magal (Korean BBQ)**



10%

**Movenpick Café**



10%

**Adriana Cocina & Bar**



10%

**Casa Asia**



25%

**The Calma Spa**



10%

**Tarabelle Coffee  
and Eats**



Special Rate

**Rezha Surf School**



10%

**Soul on The Beach**



10%

**Wanaku**



10%

**Warung House**



10%

**Shotgun Social**



# Camp Overview

<b>Camp Duration</b>	2, 3 or 4 week camp packages.
<b>Camp Participants</b>	<ul style="list-style-type: none"><li>• Children aged 4–15 years wanting to improve their English &amp; explore Bali.</li><li>• Families seeking an educational &amp; adventurous holiday.</li><li>• International students eager to meet new friends from around the world.</li></ul>
<b>Study Pack</b>	<ul style="list-style-type: none"><li>• Camp uniform (2 x T-shirts).</li><li>• Camp English Exploration Workbook.</li><li>• Weekly progress report (sent to parents every Saturday).</li><li>• Regular awards for effort &amp; excellence through a badge system camp certificate upon completion.</li></ul>
<b>Accommodation</b>	<ul style="list-style-type: none"><li>• Five-star option: Mövenpick Resort &amp; Spa Jimbaran</li><li>• Four-star option: Four Points by Sheraton Ungasan</li></ul>
<b>Meal</b>	<ul style="list-style-type: none"><li>• Breakfast: Served daily at your chosen hotel.</li><li>• Lunch &amp; Snacks: Provided for children Monday to Friday.</li><li>• Early Dinner (Tuesday &amp; Thursday): Special meals for children.</li><li>• Thursday Night BBQ: A social gathering with high-quality meats, delicious side dishes, &amp; a warm community atmosphere where parents &amp; children can enjoy great food &amp; entertainment.</li></ul>
<b>Special Camp Highlight</b>	Thursday Night BBQ & Kids' Performance Night – Every week, families come together for a BBQ while children showcase their projects & performances. This is a fantastic opportunity for families to bond, enjoy a great meal, and celebrate the week's achievements.
<b>Activities for Parents</b>	<p>Parents receive free:</p> <ul style="list-style-type: none"><li>• Yoga Classes (2 x per week for relaxation and wellness).</li></ul> <p>Optional paid activities:</p> <ul style="list-style-type: none"><li>• English Classes, Surfing lessons, Batik making, and Balinese cooking classes.</li></ul>
<b>Pre-Camp Placement Testing</b>	<p>Before arriving, each child's English level is assessed through an online meeting with a teacher. Placement is based on:</p> <ul style="list-style-type: none"><li>• Age of the child</li><li>• English proficiency</li><li>• Nationality</li></ul> <p>We aim for mixed-nationality classes to encourage English use with new friends.</p>

**REGISTER NOW**

**+62 823 4160 4831**

**[inquiries@studybaliinternational.com](mailto:inquiries@studybaliinternational.com)**

**[www.studybaliinternational.com](http://www.studybaliinternational.com)**



## Parents' Global English Camp Review - Summer 2025



Thank you very much for the wonderful two weeks. My kid first hesitated to attend the class without any Japanese speakers. But he got used to communicate in English only environment. That was the key challenge for him but he could get the big confidence. We want to come back next year.

**- Kazuhisa Takahashi (Father of Eito) - Japan**



We had an amazing summer camp experience with SBI in Bali! The programme was well-organized, educational, and full of fun activities that kept the kids engaged every day. The staff were professional and kind.

**- Eva Chan (Mother of Ray) - Taiwan**



My child had a wonderful time at the SBI English camp in Bali. The teachers were kind and supportive, and the activities were fun and engaging. It was a great opportunity to learn English naturally while making new friends from different places. We were grateful for the memorable experience and the warm atmosphere throughout the camp.

**- Maria Jeon (Bomi & Woori) - South Korea**

Stay • Study • Enjoy

