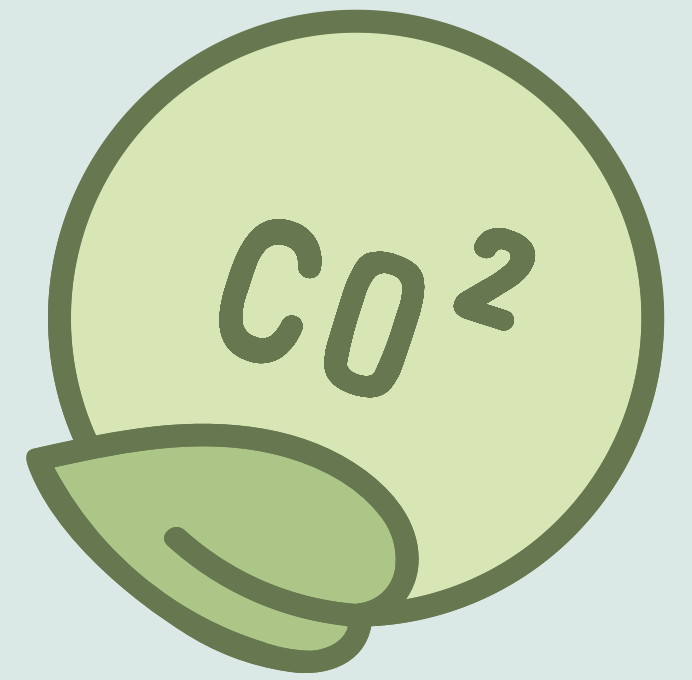
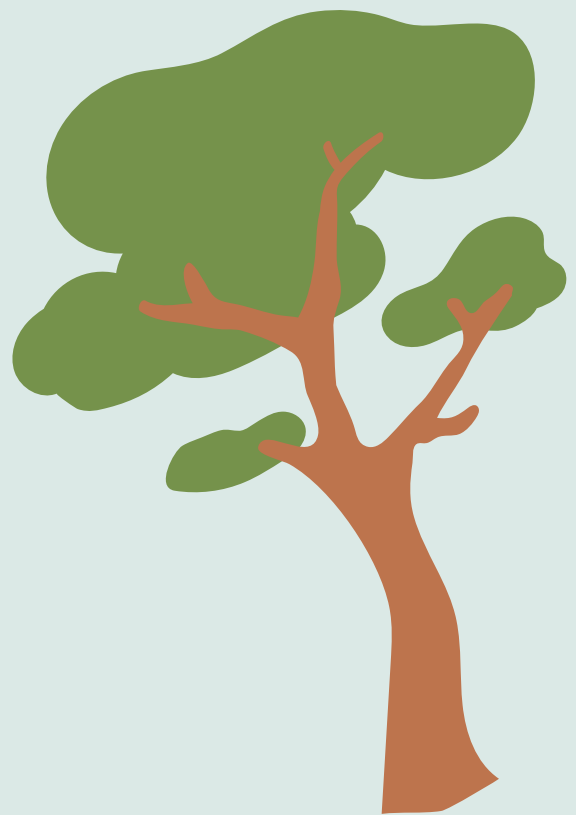


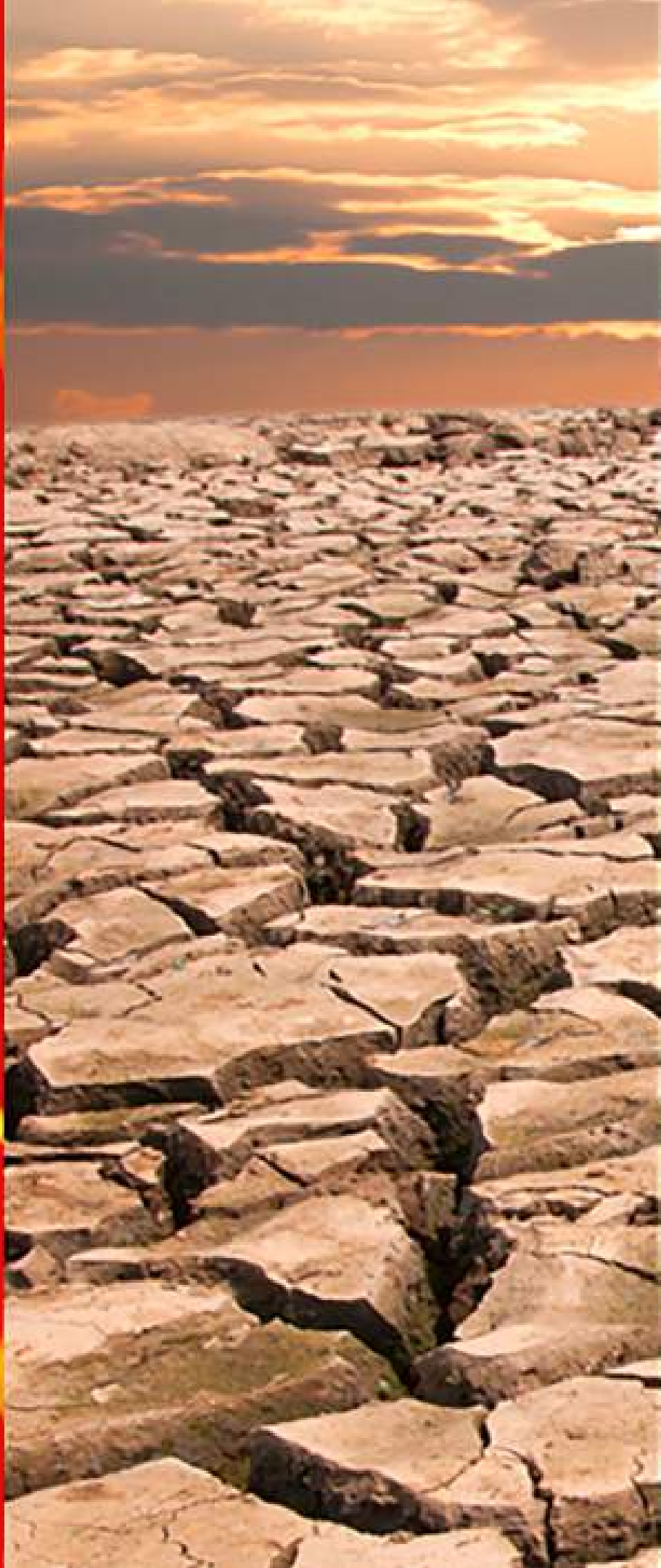
# It's serious it's real: Global Warming

SLC presentation Topic: Global issues



from 1-5 how bad do you think the world's global warming is ?





# WHAT EXACTLY IS GLOBAL WARMING ?



# MAIN CAUSES

1. Generating powers by burning fossil fuels such as coal , oil, etc
2. Cutting down forests to create farms and pastures
3. Using transportation



# MAIN EFFECTS

1. Generating powers is bad as the emission of air pollutants from fossil fuel combustion effects earth because it causes air, water and thermal pollution



2. If forests are cleared the trees will release carbon dioxide and greenhouse gases and this is causing 10% of global warming



3. Transport produces air pollution and uses up 90% of fossil fuels



# CLIMATE STORY



Lake Chilwa is the second biggest lake in Malawi



When the lake starts to dry up, life gets harder for everyone.



Sometimes it disappears completely, leaving empty canoes on the land and cattle searching for water.



It used to take 25-40 years for natural drying cycles to occur. But now, every three to five years there is an extreme recession in Lake Chilwa.

This is the impact of climate change.

At other points of the year the lake floods



During the times when the lake is dry Fisherman can't catch or sell fish , canoe transporters can't get customers and locals can't really sell much. They get effected by this cause they can't make a living



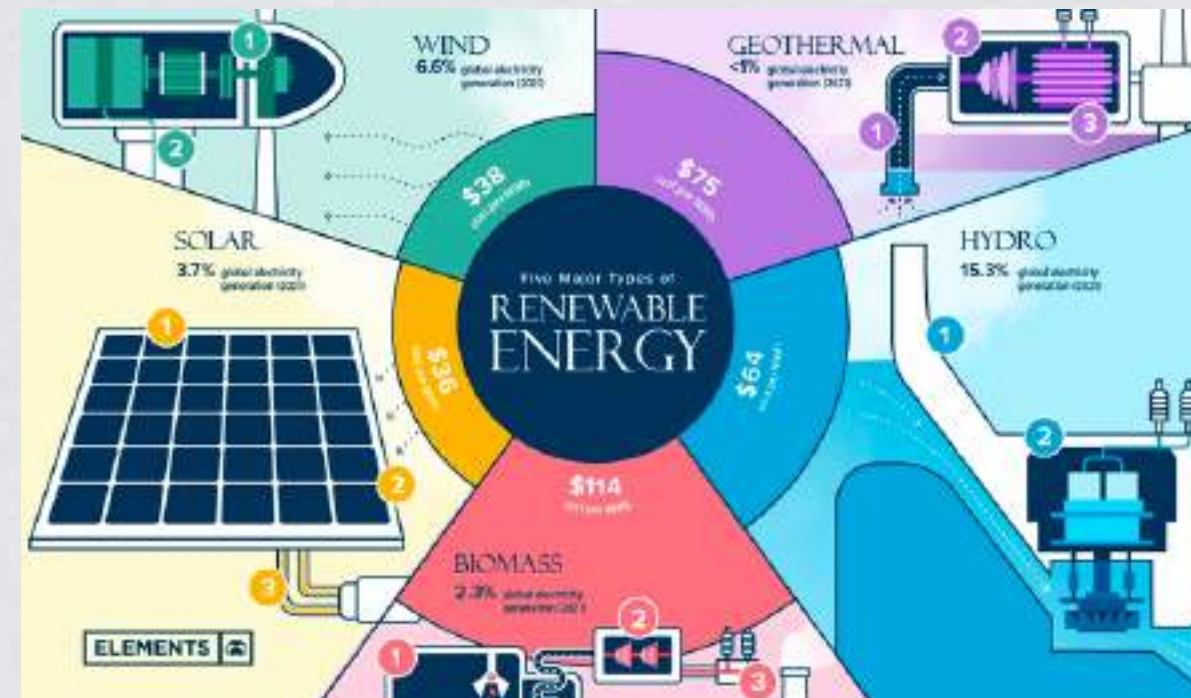


# ways to help global warming

# 1.Reduce transport



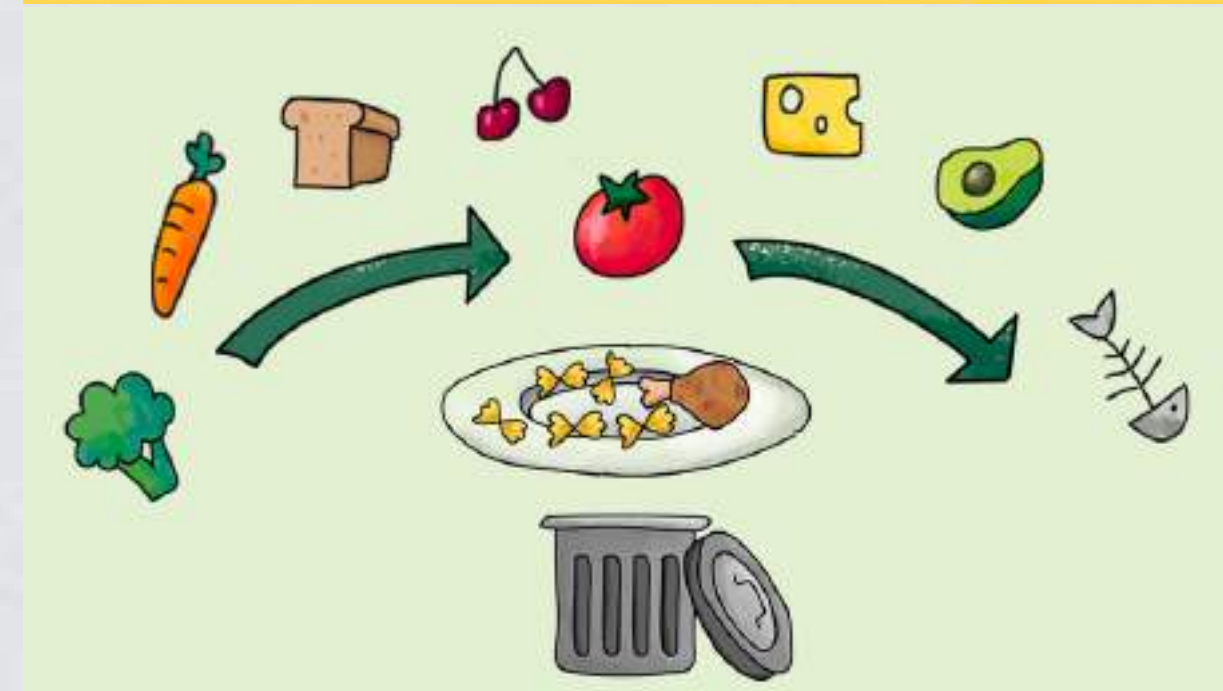
# 2. Use renewable energy



**3. Change a light.**



**4. Throw less food away.**



**THANK YOU ALL FOR LISTENING !**



**DO YOU HAVE ANY QUESTIONS ?**

# Recent news !!

## The willow project

is \$6 billion proposal from ConocoPhillips' (COP.N) to drill oil and gas in Alaska

the project would generate enough oil to release 9.2 million metric tons of planet-warming carbon pollution a year.

Lots of people are trying to stop it

